



Actual product appearance may vary.

**BZ Series Standard Basic Switch,
Single Pole Double Throw Circuitry, 10
A at 125 Vac, Roller Lever Actuator,
3,34 N [12 oz] Maximum Operating
Force, Silver Contacts, Screw
Termination, CSA, UL**

Features

- Accepted world-wide standard "Large Basic" switch
- Low operating force and differential travel
- Long mechanical life up to 20,000,000 cycles at 95% survival
- Elongated mounting hole for easier, more accurate mounting
- Current rating ranges from 15 A to 25 A
- Choice of actuation, termination and operating characteristics

Potential Applications

- Irrigation systems
- Semi-trailer trucks
- Timing devices
- Office equipment
- Test instruments
- Medical/dental equipment
- HVAC equipment
- Manually operated devices
- Valves

Description

MICRO SWITCH™ BZ/BA Series standard basic switches are used for simple or precision on/off application needs.

Product Specifications	
Switch Type	MICRO SWITCH™ Standard 25,4 mm H x 17,8 mm W x 50,8 mm L [1.0 in H x 0.7 in W x 2.0 in L]
Sealed	No
Ampere Rating	10 A
Circuitry	Single Pole Double Throw (SPDT)
Actuator	Roller Lever
Termination	Screw
Operating Temperature Range	-55 °C to 85 °C [-67 °F to 185 °F]
Voltage	125 Vac
Approvals	CSA,UL

Actuator Length	31,75 mm [1.25 in]
Contact Type	Silver
Operating Force (O.F.)	3,34 N [12.0 oz] max.
Release Force (R.F.)	1,11 N [4.0 oz] min.
Pretravel (P.T.)	0,38 mm [0.015 in] max.
Overtravel (O.T.)	2,54 mm [0.10 in] min.
Differential Travel (D.T.)	0,013 mm - 0,025 mm [0.0005 in - 0.0010 in]
Operating Position (O.P.)	310,37 mm [10.235 in]
Material	Plastic
Housing Material	General Purpose Phenolic
High Temperature	204 °C [400 °F]
UL File #	E12252
CSA File #	LR41370
Agency Approvals and Standards	1054
Mounting Screw Size	3,53 mm [0.139 in]
Mounting Centers	25,4 mm [1 in]
Maximum Tightening Torque	0,33 N m [3.0 in lb]
Weight	34,5 g [0.076 lb]
Package Height	24,1 mm [0.95 in]
Package Width	17,5 mm [0.69 in]
Package Length	49,3 mm [1.94 in]
Recommended For	Best repeatability and operating position stability
Availability	Global
UNSPSC Code	30211905
UNSPSC Commodity	30211905 Snap switches
Series Name	BZ/BA/WA/YZ

MICRO SWITCH

A DIVISION OF UNDERWRIGHTS LABORATORY COMPANY

FED. MFR. CODE 91929

SWITCH - BASIC

CATALOG LISTING

BZ-RW922-A2**5****M BZ-RW922-A2**

DRAWING NUMBER

ISSUE
X 8
5

REPLACES

RELEASE NO. SR6481

23 JULY 57

CHECK

FT

X.S.U.

6 MAY 57

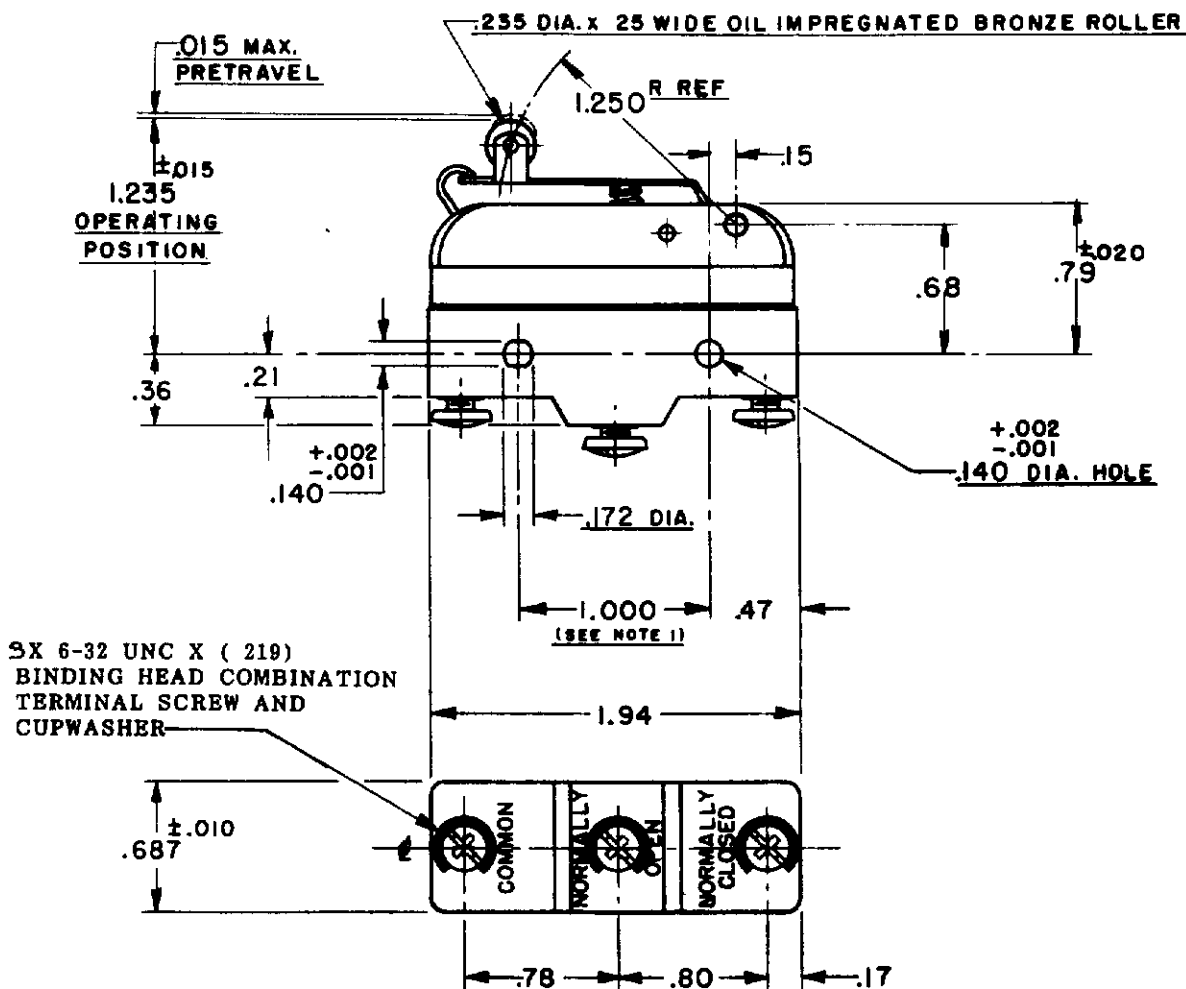
CHECK

X.S.U.

26 JULY 57

CHECK

GCH



SX 6-32 UNC X (219)
BINDING HEAD COMBINATION
TERMINAL SCREW AND
CUPWASHER

NOTE -

1 - MOUNTING HOLES WILL ACCEPT PINS OR SCREWS
OF .139 MAX DIA. ON 1.000 ±.002 CENTERS

2 - PLASTIC PARTS ARE MADE OF MINERAL FILLED PHENOLICS.

THIS DRAWING COVERS A PROPRIETARY ITEM AND IS THE PROPERTY OF MICRO SWITCH, A DIVISION OF HONEYWELL THIS DRAWING IS NOT TO BE COPIED OR USED WITHOUT THE APPROVAL OF MICRO SWITCH.

CHARACTERISTICS

OPERATING FORCE ----- 12 OZ MAX.

RELEASE FORCE ----- 4 OZ. MIN.

DIFFERENTIAL TRAVEL ----- 0005 - .0010

OVERTRAVEL ----- .100 MIN.

ELECTRICAL DATA

CONTACT ARRANGEMENT

S. P. D. T.

UNDERWRITERS' LAB. INC. LISTED RATING
10A - 125, 250 OR 480 VAC
-L88- 1/8HP - 125 VAC; 1/4HP - 250 VAC

**SCALE FULL**

DO NOT SCALE PRINT

UNLESS OTHERWISE
SPECIFIED
DIMENSIONS ARE IN INCHES
TOLERANCES ARE:

ONE PLACE (.0) ±.030
TWO PLACE (.00) ±.015
THREE PLACE (.000) ±.005
ANGLES ±

WEIGHT

C-80378

DRAWN

R G. C 3, MAY '57